

NAME OF THE PROJECT :

PROPOSED 5-(FIVE) STORED RESIDENTIAL
DUG NO # SA:-2084 RS:- 9593,
KHATIUN NO:-SA:-153,154 RS:-1584,924
JL NO:-107/80
TOTAL LAND:-0.034950 ACRES.
EAST SHALGARIA,PABNA SADAR,PABNA.

MD.SUJAN ALI

CONSULTANT :

RMS DESING CONSULTANTS FARM.
(Architects & Engineers)
CELL :01723255437.

DESIGN BY:

ENGR.MD.MAREFUL ISLAM (MARUF)
B.Sc. in Civil Engg.

CHECKED BY:

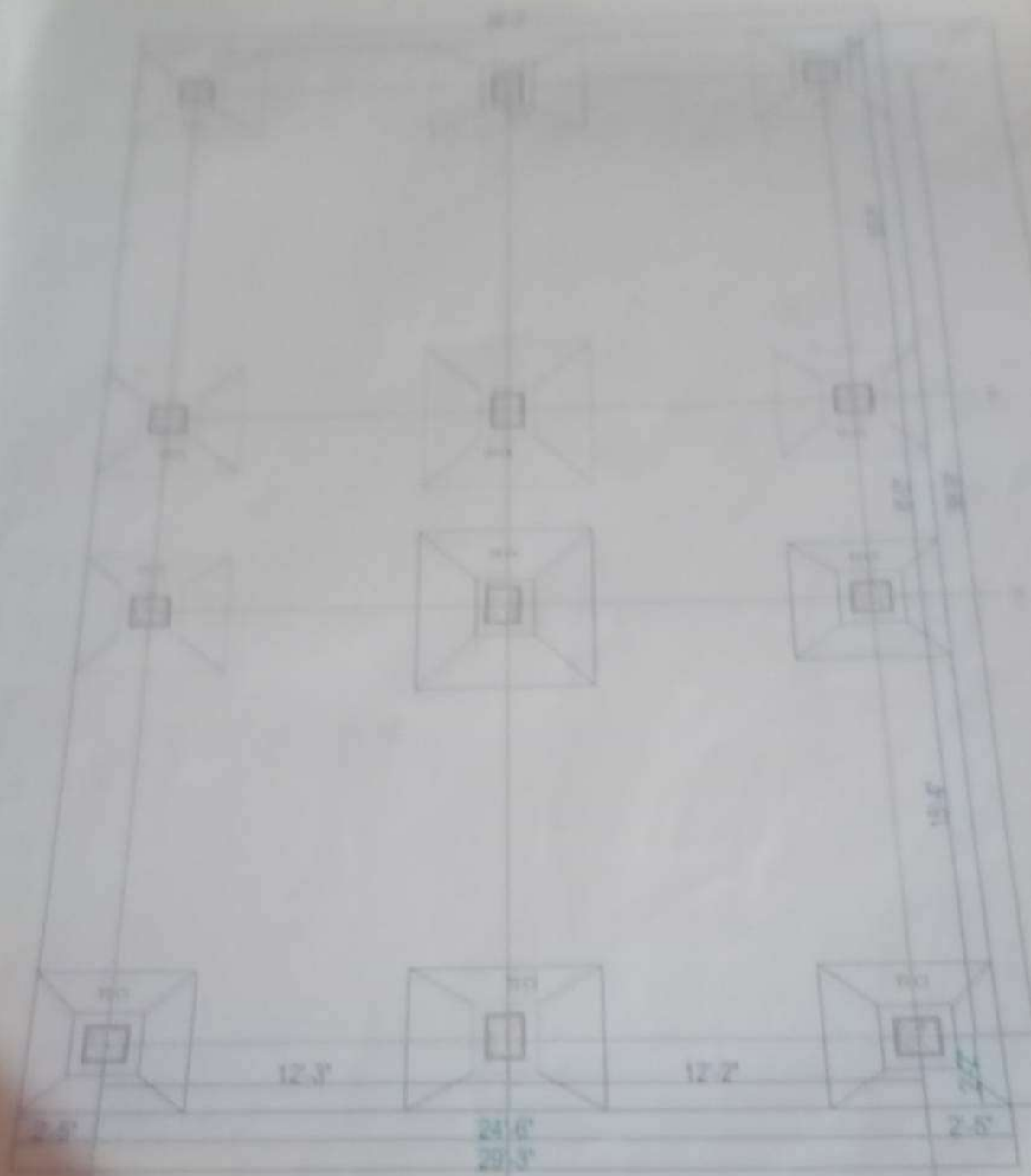
ENGR.MD.MAREFUL ISLAM (MARUF)
B.Sc. in Civil Engg.

STRUCTURAL
Working Drawing

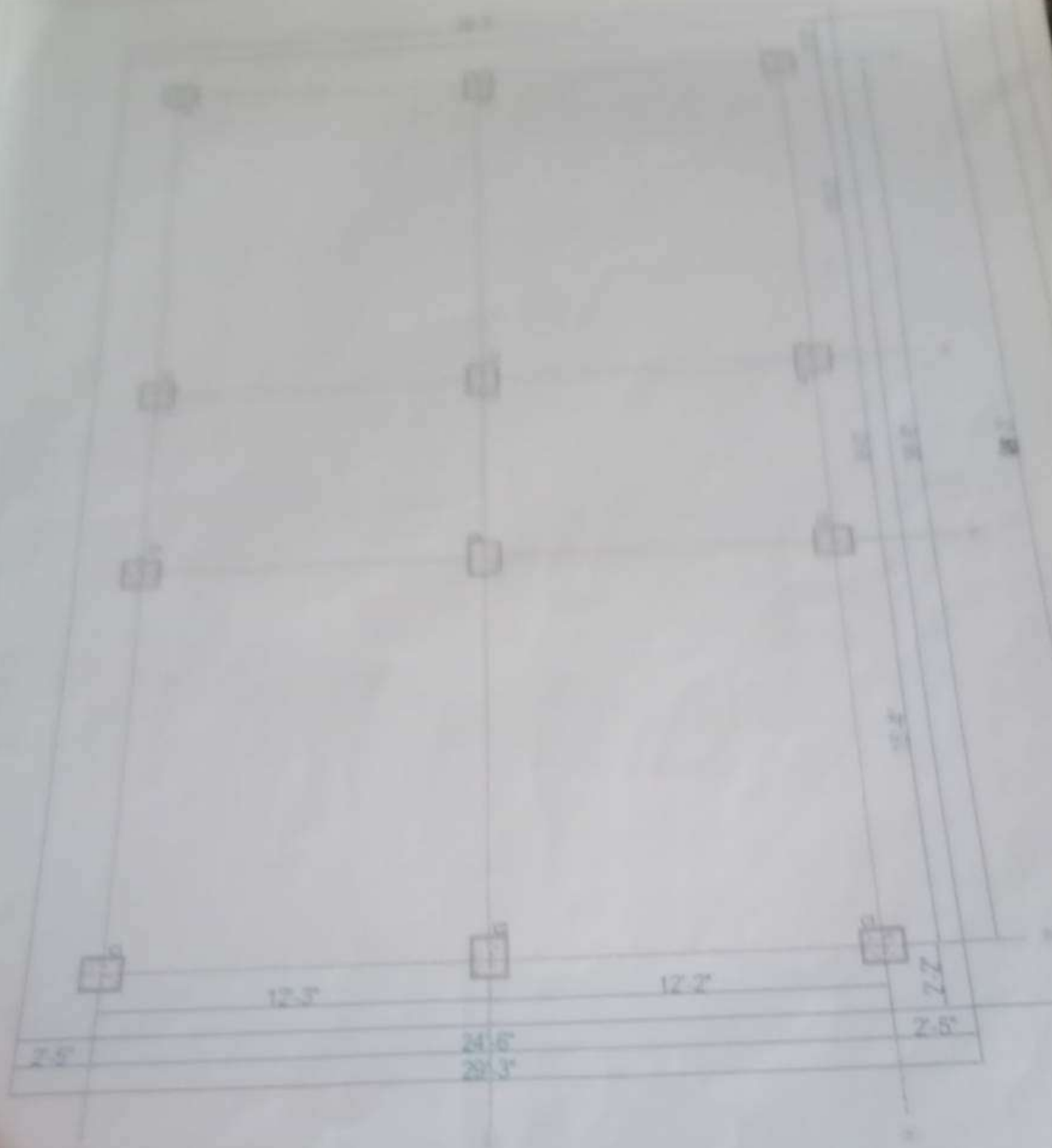


Shot on vivo S1
AI Triple Camera

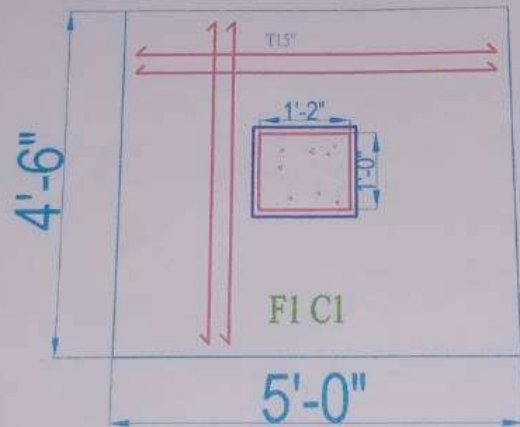
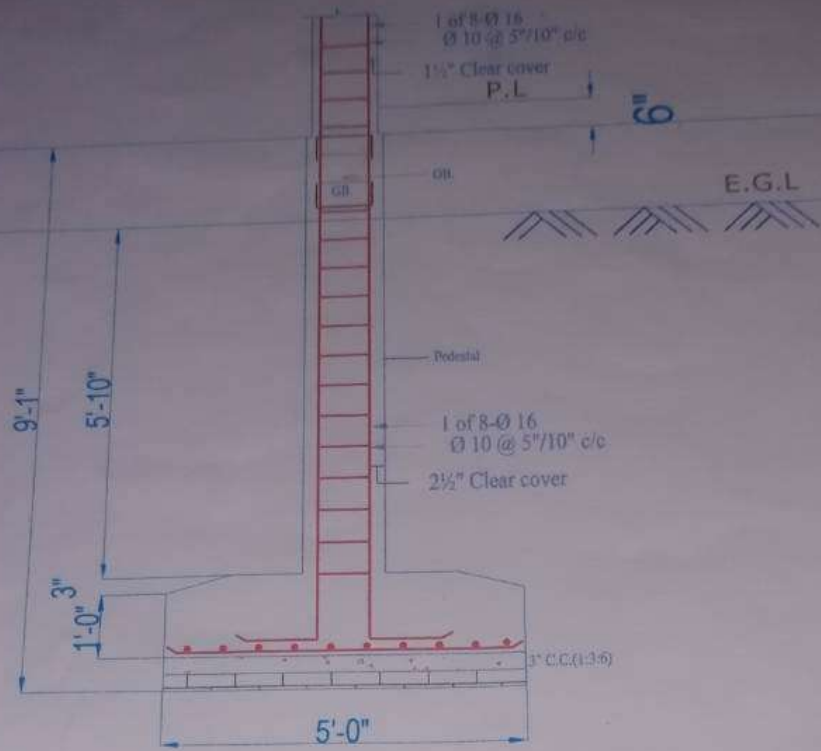
2023.11.02 19:54



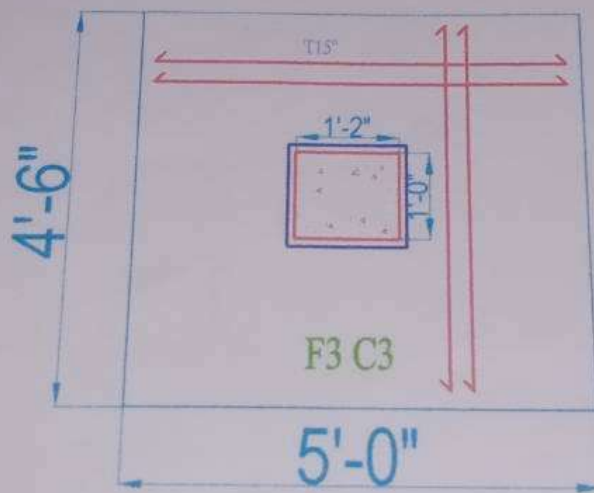
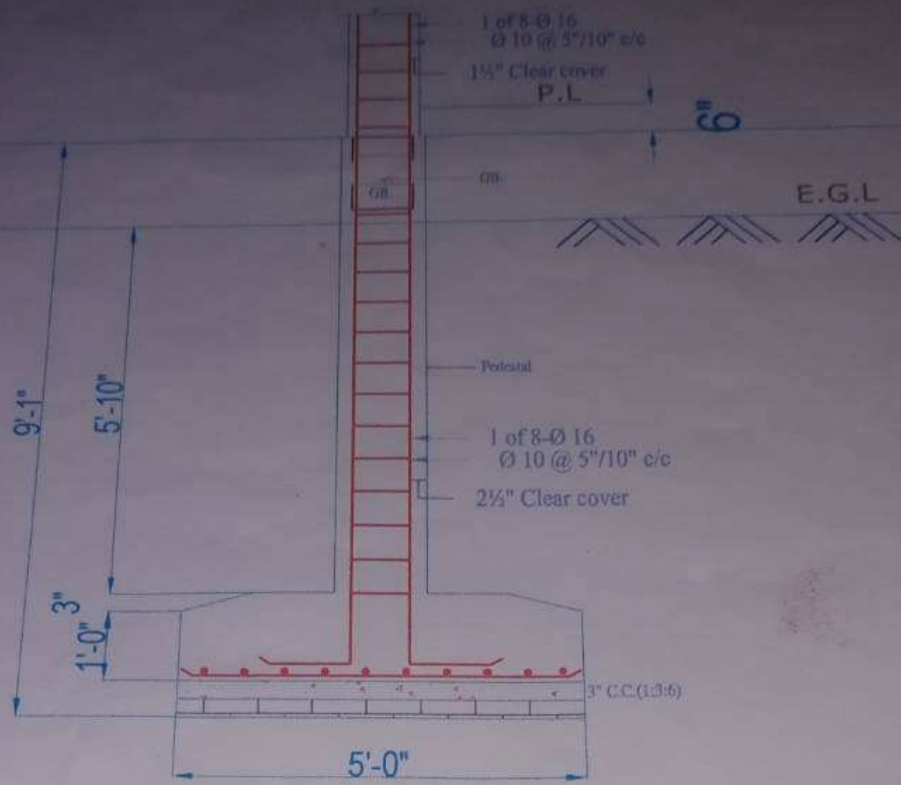
LAYOUT PLAN OF FOOTINGS.



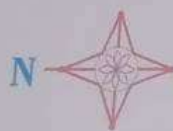
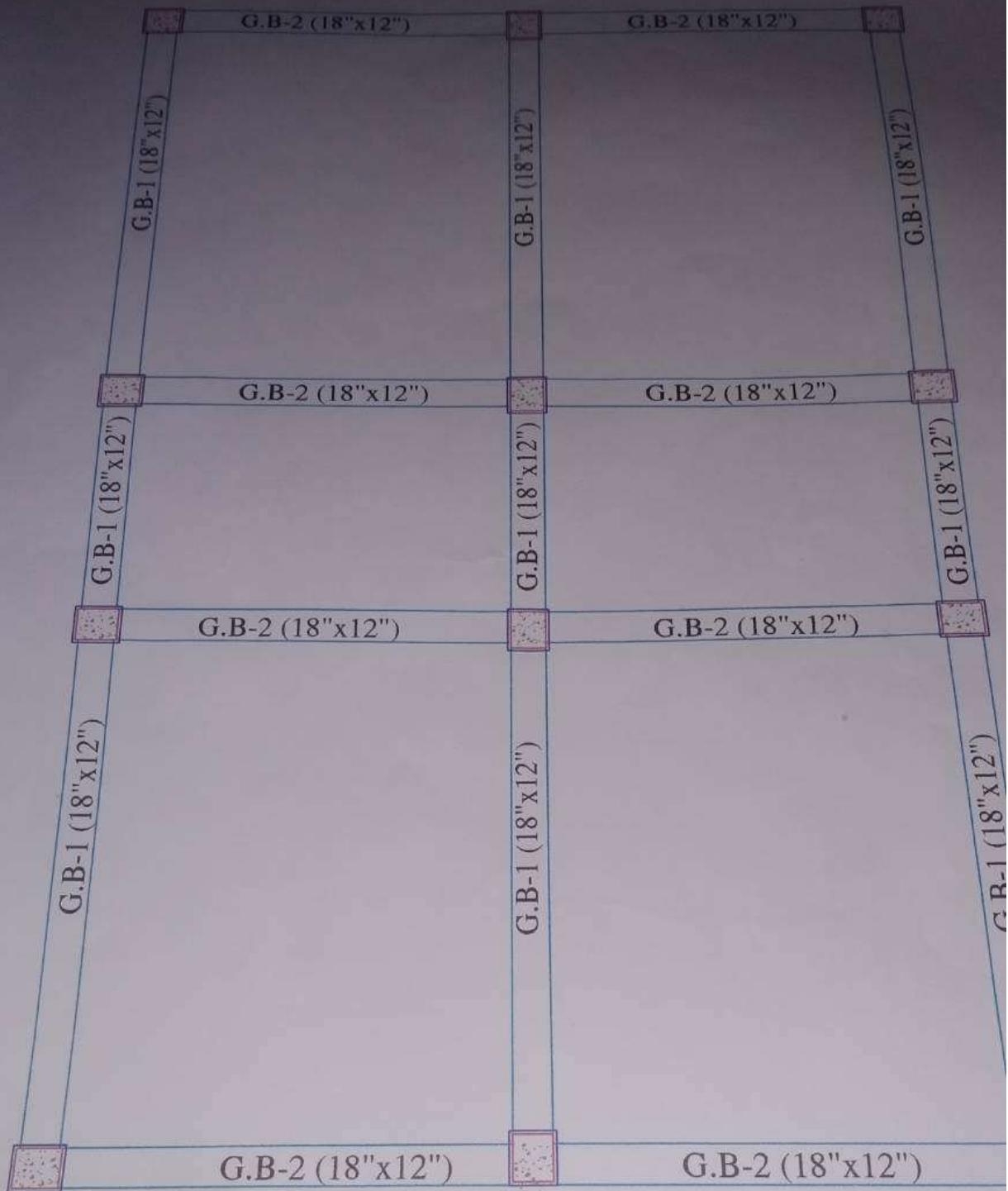
LAYOUT PLAN OF COLUMNS.



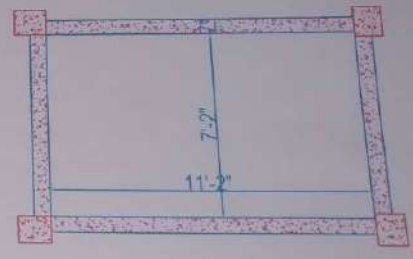
PLAN OF FOOTING F1 C1
 (Typical)



PLAN OF FOOTING F2 C2
(Typical)



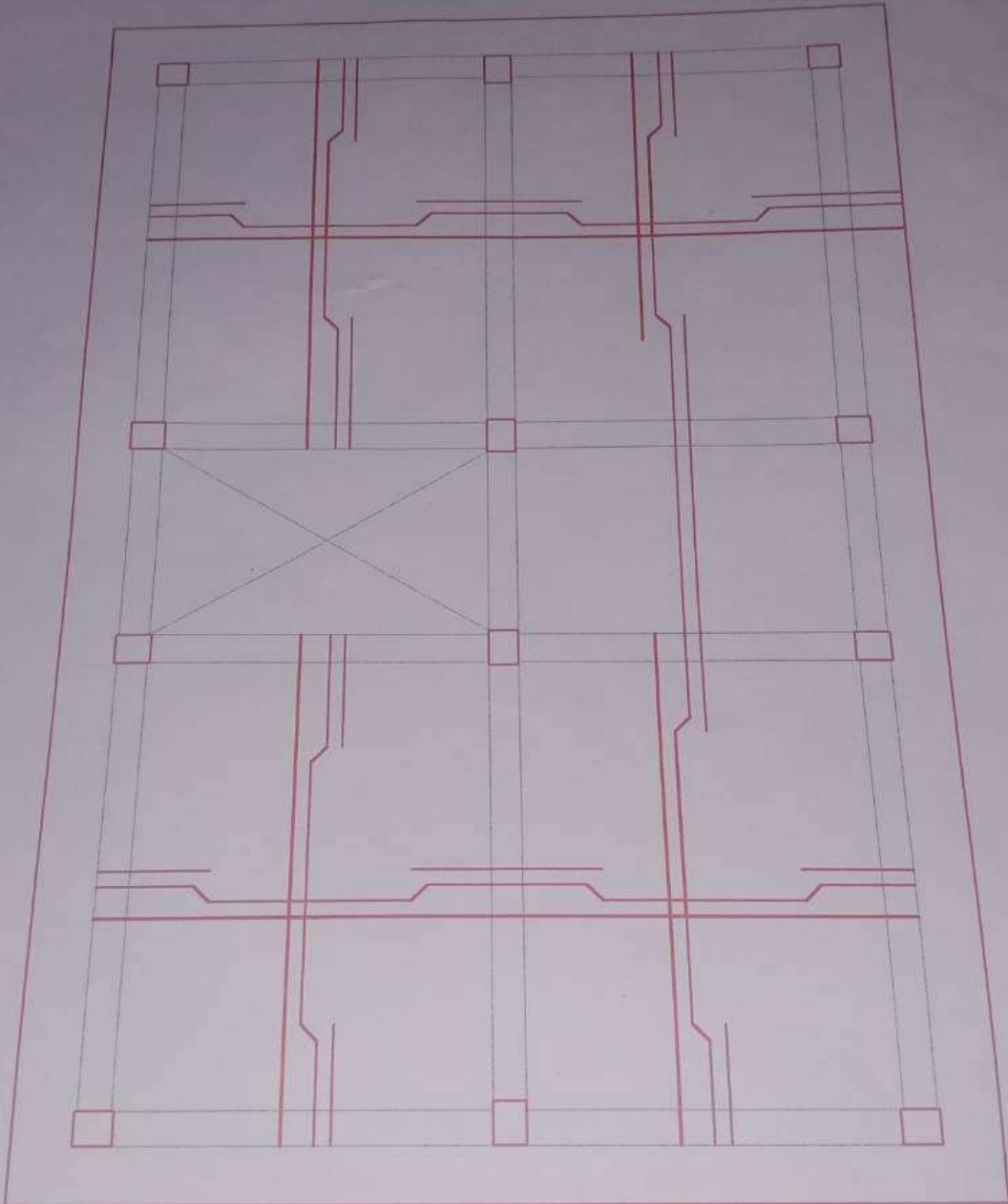
GROUND FLOOR BEAM LAYOUT



PLAN OF OVER HEAD WATER RESEVIOR

NOTE :

- Slab Thickness = 6" Except as mentioned on plan
- Slab Reinforcement (72.5 Grade) shall be as follows;
(A) = $\text{Ø}10$ @ 4.5" c/c alt. ckd. (C) = 1- $\text{Ø}12$ Extra Top
(B) = $\text{Ø}10$ @ 5.5" alt. ckd. (D) = 2- $\text{Ø}12$ Extra Top
- Binders are not shown but $\text{Ø}10$ @ 6" c/c shall be used
- Corner reinforcement $\text{Ø}10$ @ 8" c/c shall
Be used at places marked with Ⓢ



GROUND FLOOR SLAB REINFORCEMENT

R O A D 12'-0"

R O A D 4'-0"

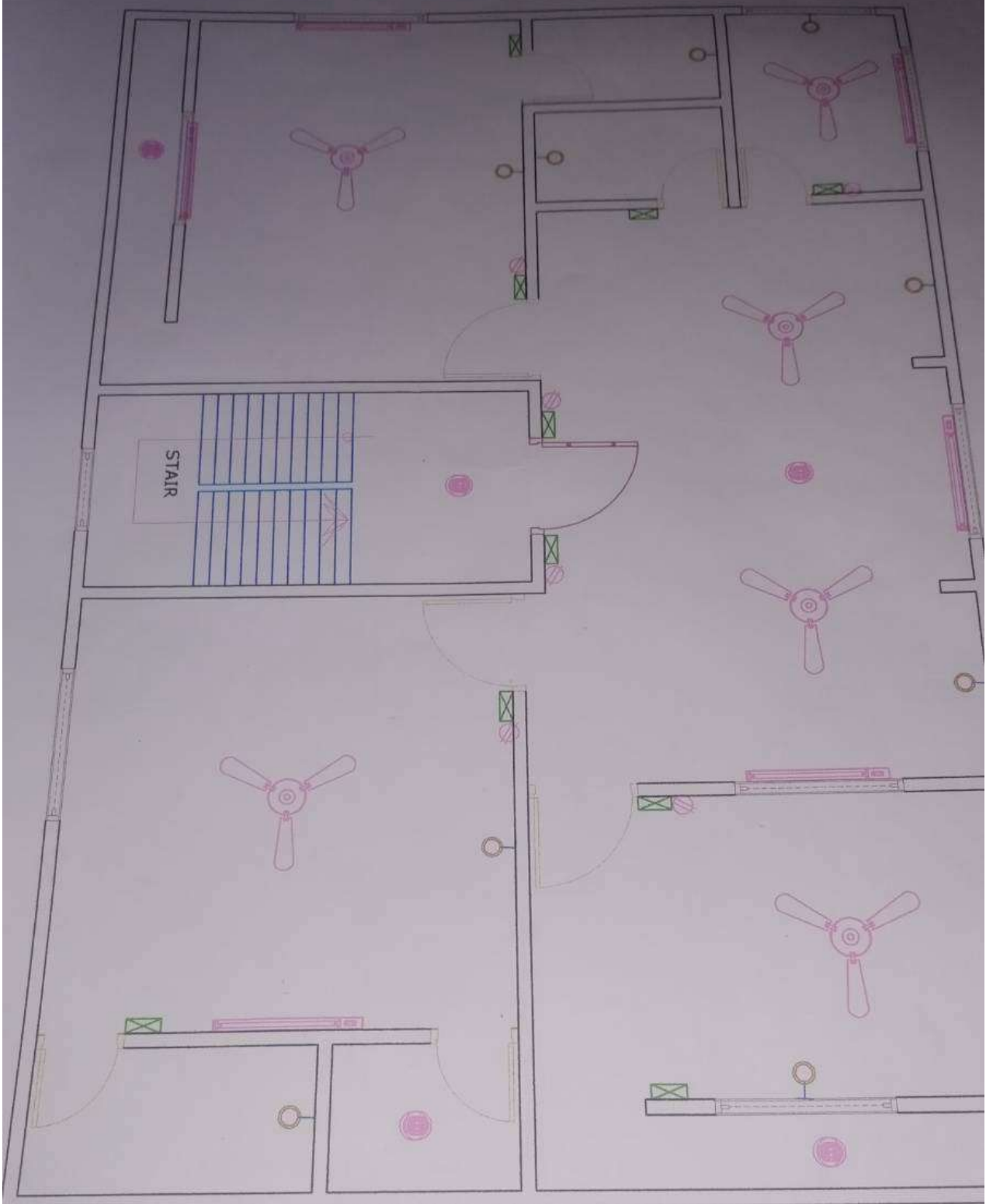


ELECTRICAL GROUND FLOOR PLAN



Shot on vivo S1
AI Triple Camera

2023.11.02 19:57

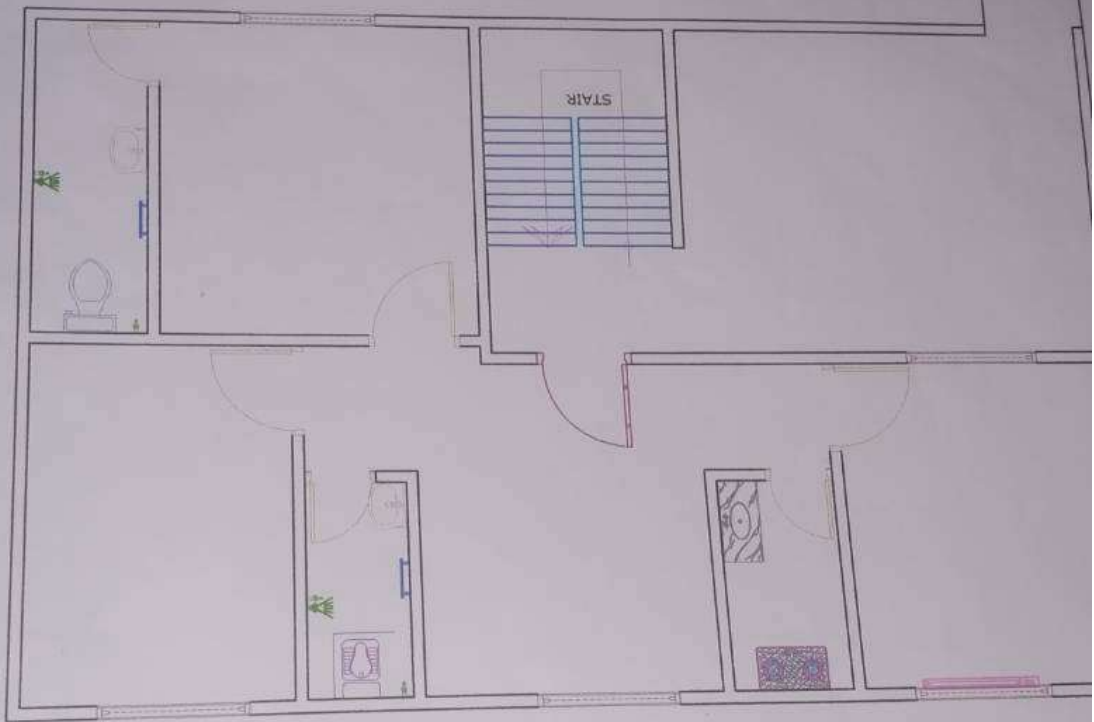


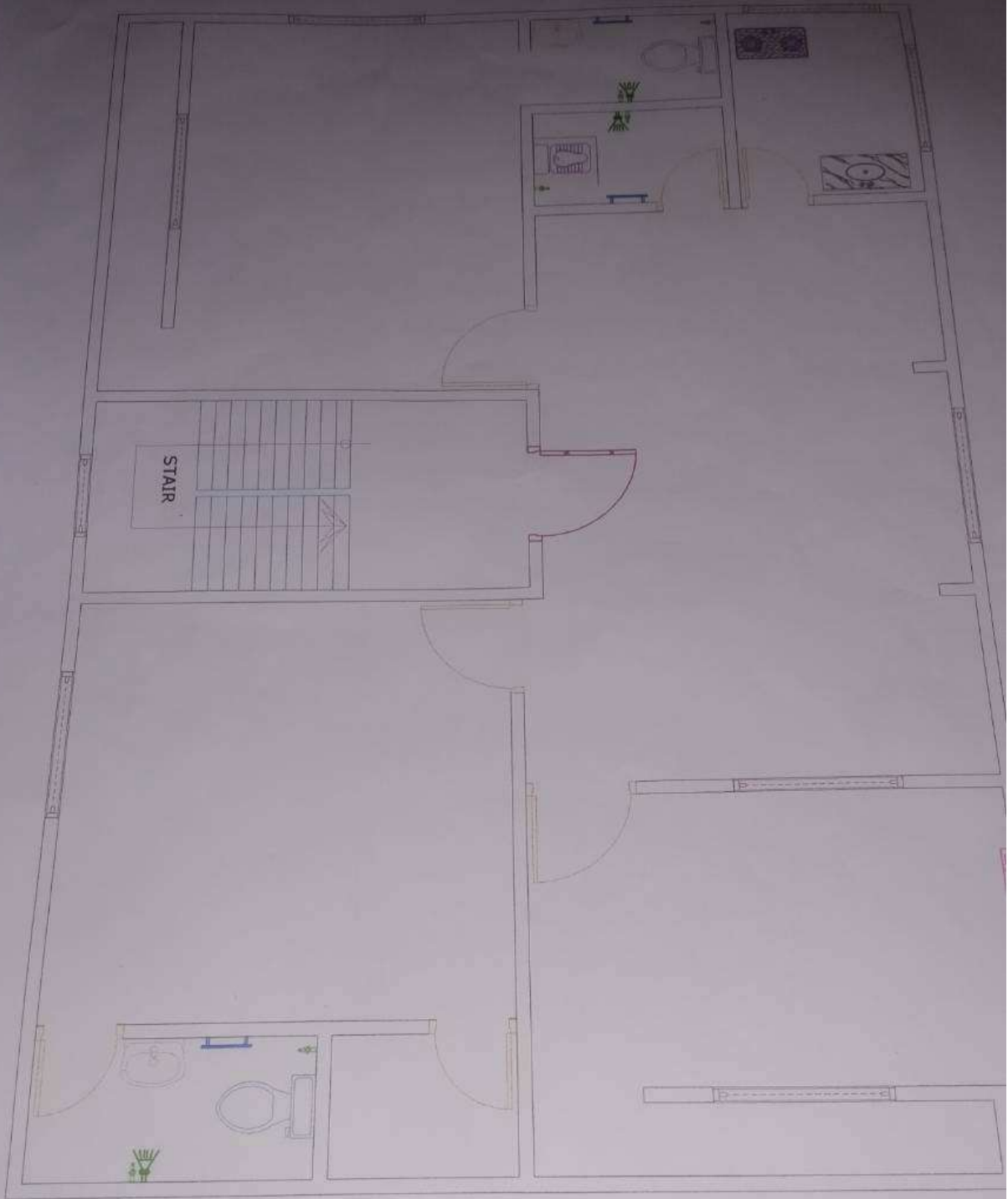
ELECTRICAL 1ST FLOOR PLAN

R O A D 12'-0"

R O A D 4'-0"

GROUND FLOOR PLAN





1ST FLOOR PLAN